



U N I V E R S I T Y O F
SOUTH CAROLINA[®]
A I K E N

Profile of Minority Students and Their Success at USCA

Dr. Braden J. Hosch
Director of Institutional Effectiveness

March 3, 2005



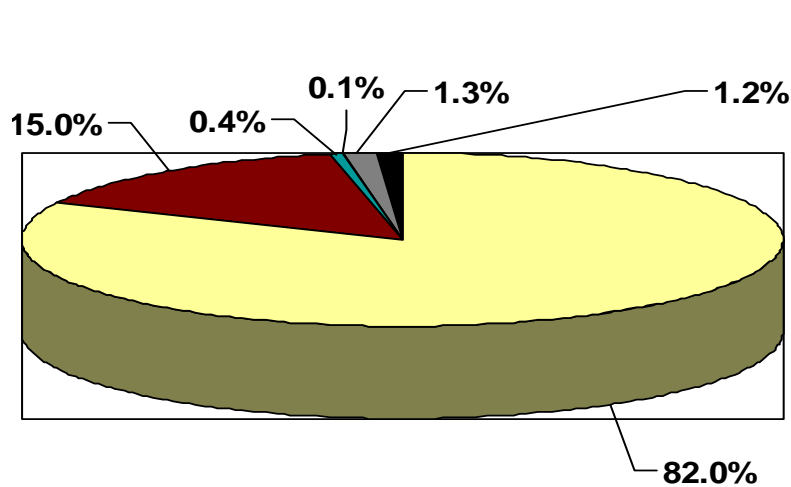
Overview

- Marked increase in enrollment of minority students, primarily Black or African American students, between 1993 and 2004.
- Gap in SAT scores between white students and Black or African American students is similar to state and national gap, though less pronounced.
- Collegiate academic performance of African American or Black students is lower than that of white students and places them at greater risk to drop out without earning a degree.
- While one-year retention rates of African American or Black students is comparable to that of white students, six-year graduation rates are about 8-10% lower for African American or Black students.

Demographic Profile of Undergraduates

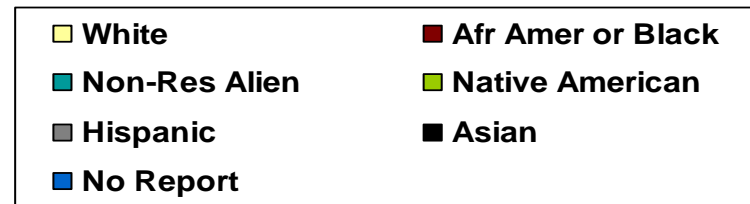
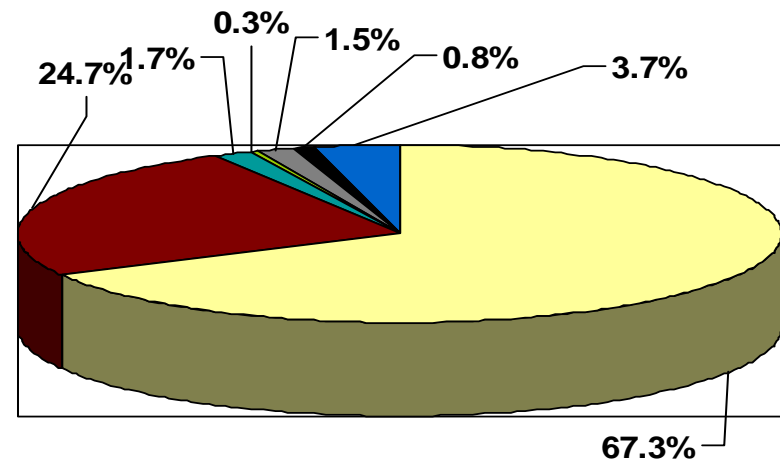
Fall 1993

3,297 undergrads
63.9% Female
56.3% Full-time



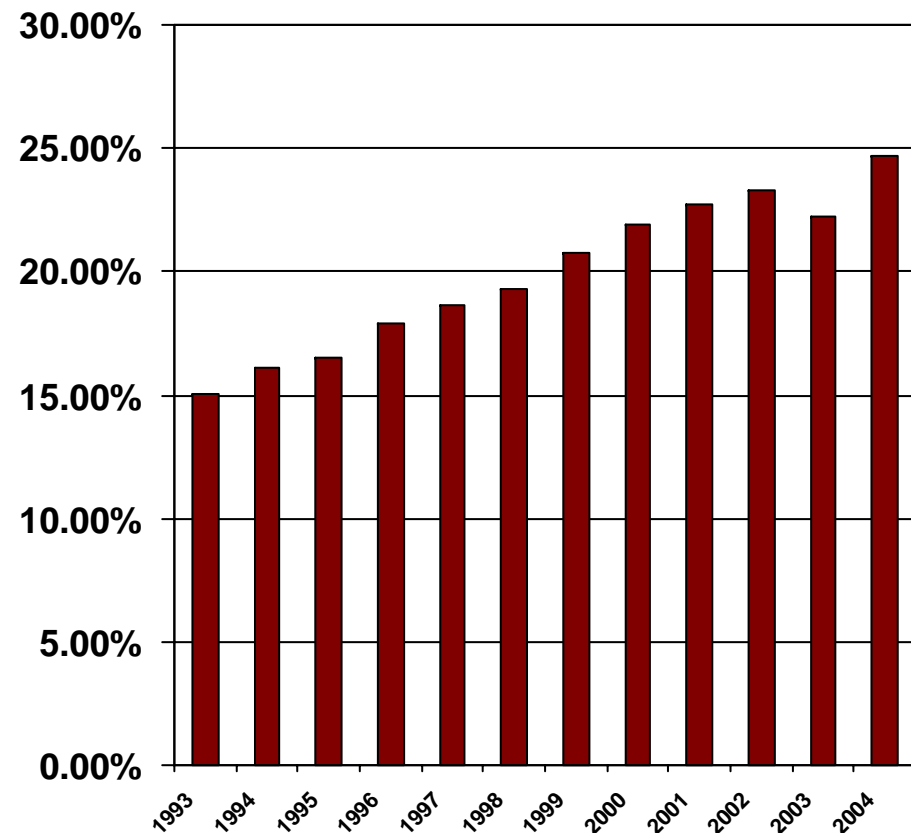
Fall 2004

3,268 undergrads
67.5% Female
71.2% Full-time



Increase in Population of African American or Black Students

The numbers and percentage of African American or Black undergraduates increased from 496 (15.0%) in 1993 to 807 (24.7%) in 2004.



Major Field of Study By Race/Ethnicity

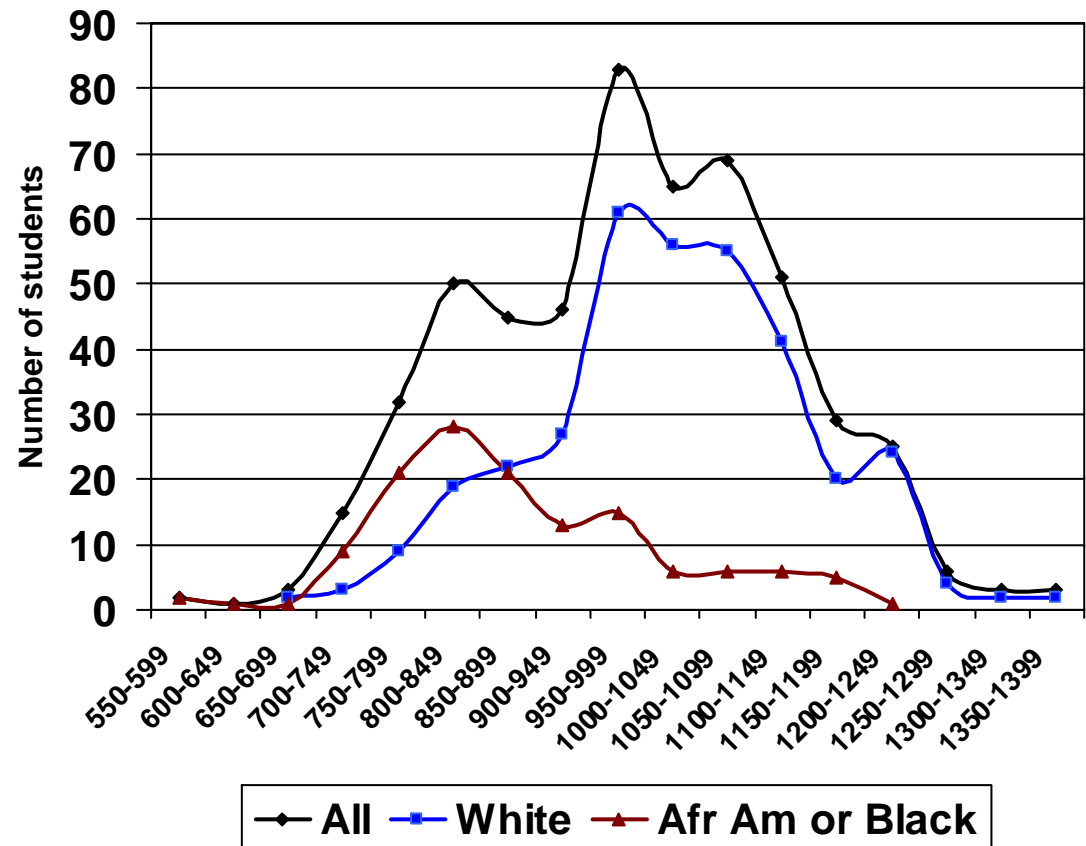
Major	All	White	African Amer/Black	No Report	Hispanic	Asian	American Indian	Other
Sociology	177	42.9%	50.8%	4.0%	2.3%			
Political Science	41	48.8%	36.6%	9.8%	4.9%			
Psychology	134	59.0%	33.6%	5.2%	1.5%	0.7%		
Interdisciplinary Studies	24	62.5%	33.3%	0.0%		4.2%		
Exercise Science	167	63.5%	29.3%	4.2%	1.8%	0.6%		0.6%
Math & Comp Science	76	57.9%	28.9%	10.5%	2.6%			
Nursing (all)	518	66.2%	28.8%	3.3%	0.6%		0.8%	0.4%
Communications	124	66.1%	27.4%	3.2%	2.4%	0.8%		
Biology	199	64.8%	26.1%	4.0%	2.5%	2.0%		0.5%
Business	505	68.5%	23.0%	4.4%	2.8%	1.0%	0.2%	0.2%
Industrial Math	9	66.7%	22.2%	11.1%				
Chemistry	41	70.7%	22.0%	4.9%		2.4%		
Pre-Pharmacy	46	60.9%	21.7%	8.7%		6.5%	2.2%	
English	42	69.0%	21.4%	7.1%	2.4%			
Engineering	67	70.1%	20.9%	6.0%	1.5%	1.5%		
Allied Health	5	80.0%	20.0%	0.0%				
Fine Arts	95	75.8%	16.8%	4.2%		2.1%	1.1%	
Education (all)	473	78.4%	16.7%	2.5%	1.7%	0.2%	0.2%	0.2%
Undecided	146	74.0%	14.4%	5.5%	3.4%	2.1%	0.7%	
Music Education	7	85.7%	14.3%	0.0%				
History	41	90.2%	9.8%	0.0%				
Grand Total	2937	67.3%	25.4%	4.2%	1.8%	0.8%	0.3%	0.2%

SAT score distribution of USCA FT Freshmen Entering Fall 2004

Mean Combined SAT Scores

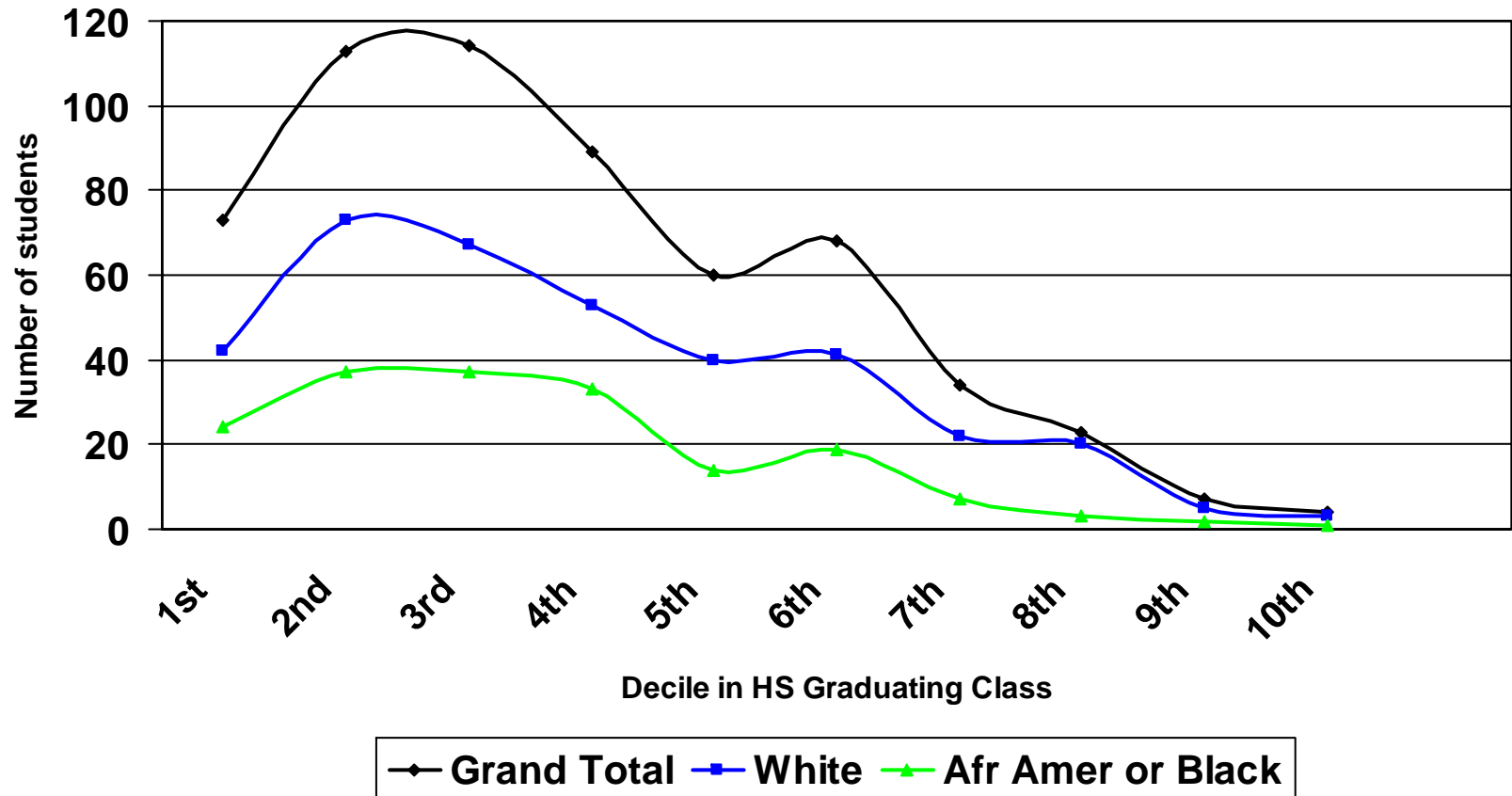
	USA	SC	USCA
White	1059	1032	1015
Black	857	842	885
All	1026	986	981

USCA FT Freshmen Fall 2004



HS Class Rank of USCA FT Freshmen Entering Fall 2004

USCA FT Freshmen Fall 2004



Fall 2004 USC Semester GPA

Academic performance as measured by semester grade point average is related to three variables:

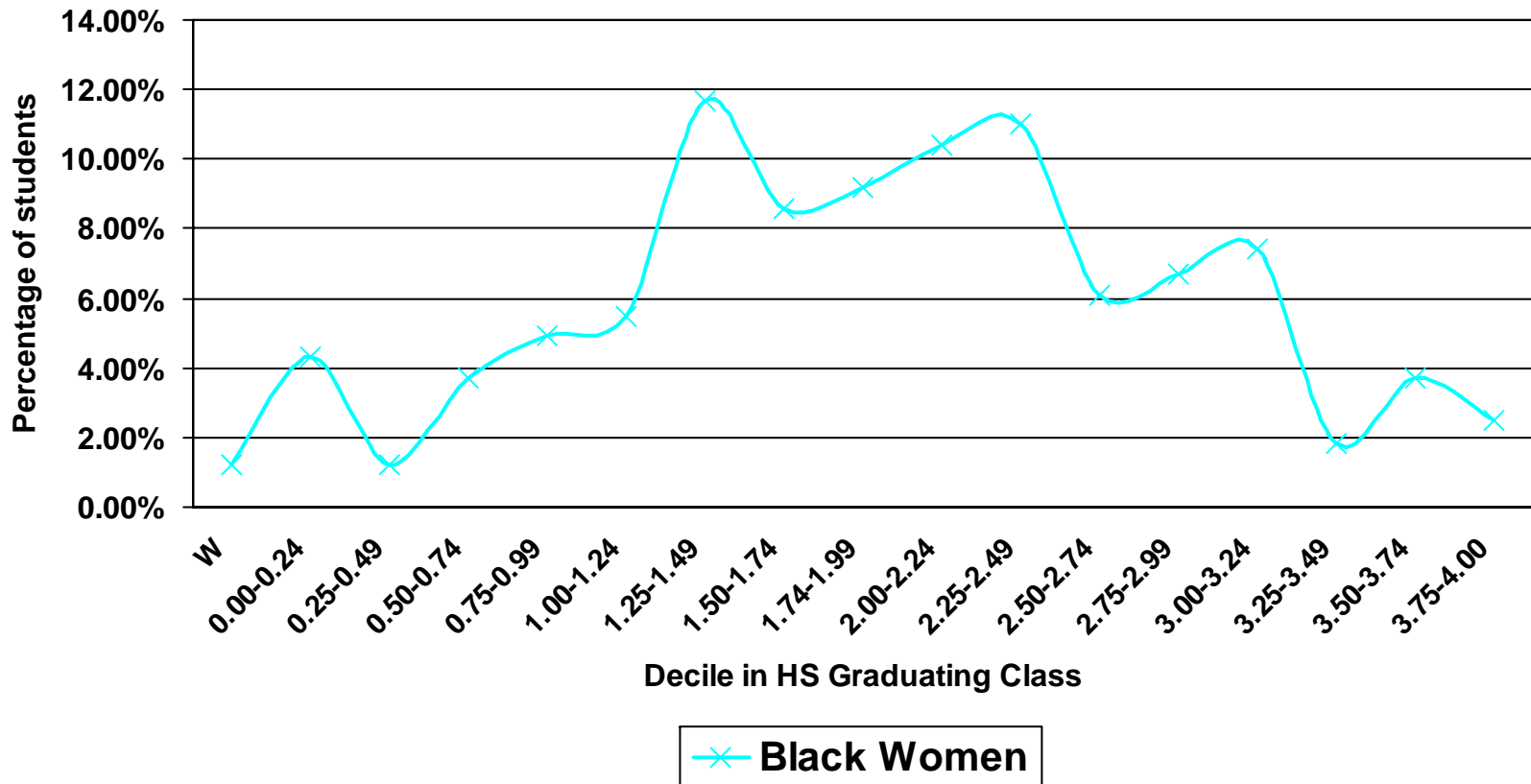
- Gender
- Race/Ethnicity
- Class Level (Hours Earned)

Semester Grade Point Average By Class Level, Gender and Race/Ethnicity

	Men			Women		
	White	Afr Amer or Black	Difference	White	Afr Amer or Black	Difference
Freshman	2.31	2.03	-0.28	2.50	1.97	-0.54
Sophomore	2.59	2.01	-0.57	2.96	2.45	-0.51
Junior	2.82	2.49	-0.32	3.06	2.56	-0.50
Senior	3.01	2.65	-0.36	3.20	2.62	-0.58

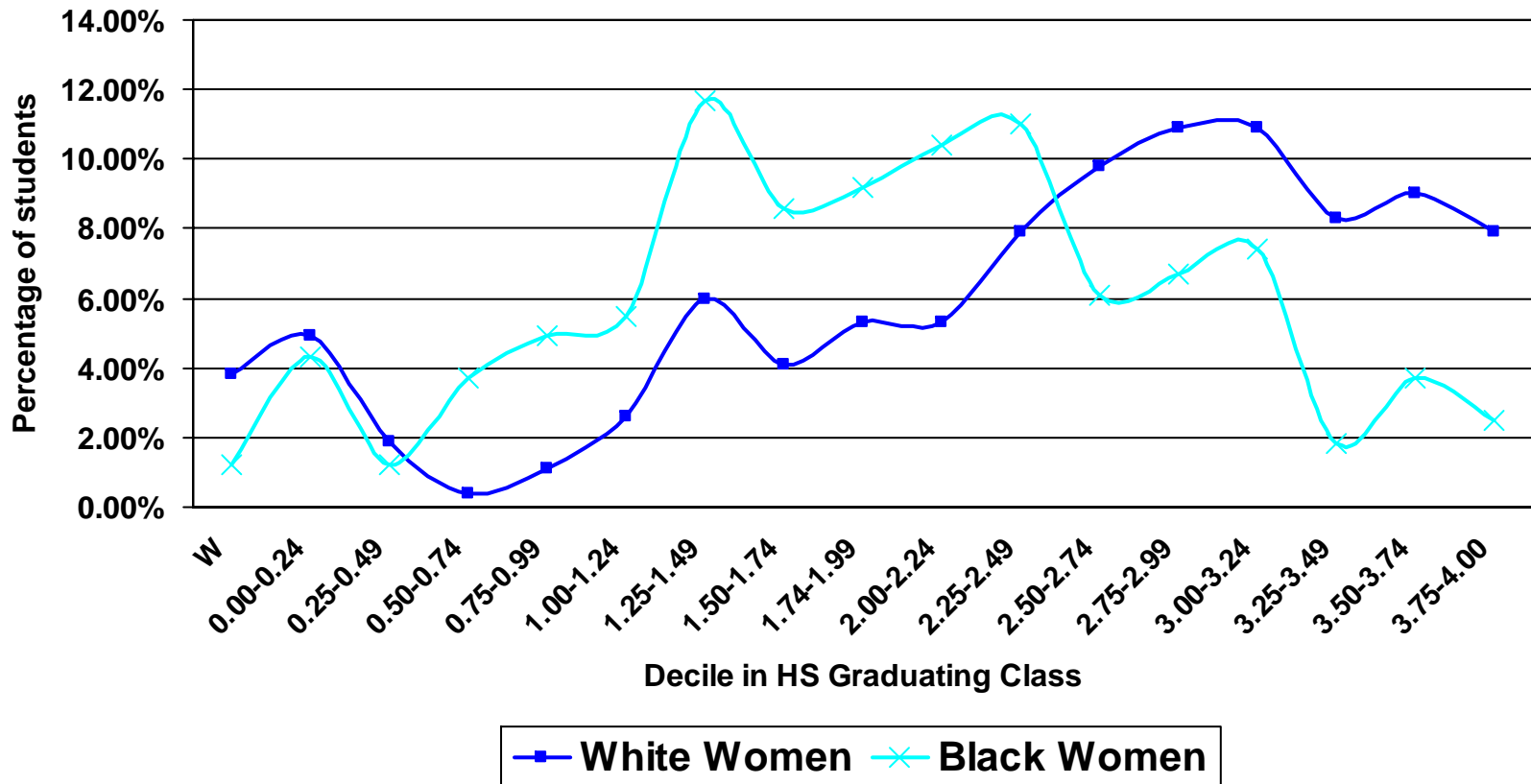
Freshman Fall 2004 Semester GPA

Women



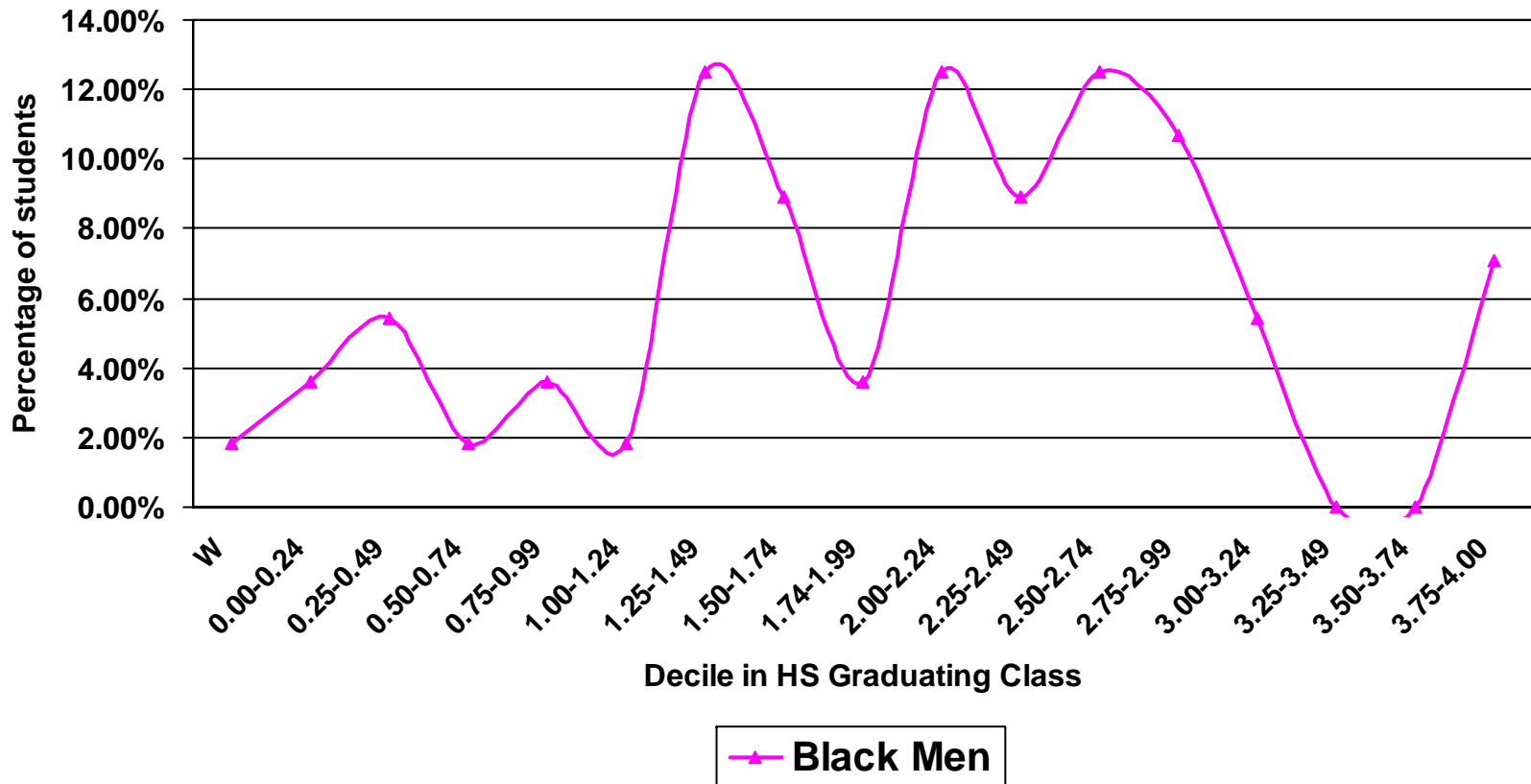
Freshman Fall 2004 Semester GPA

Women



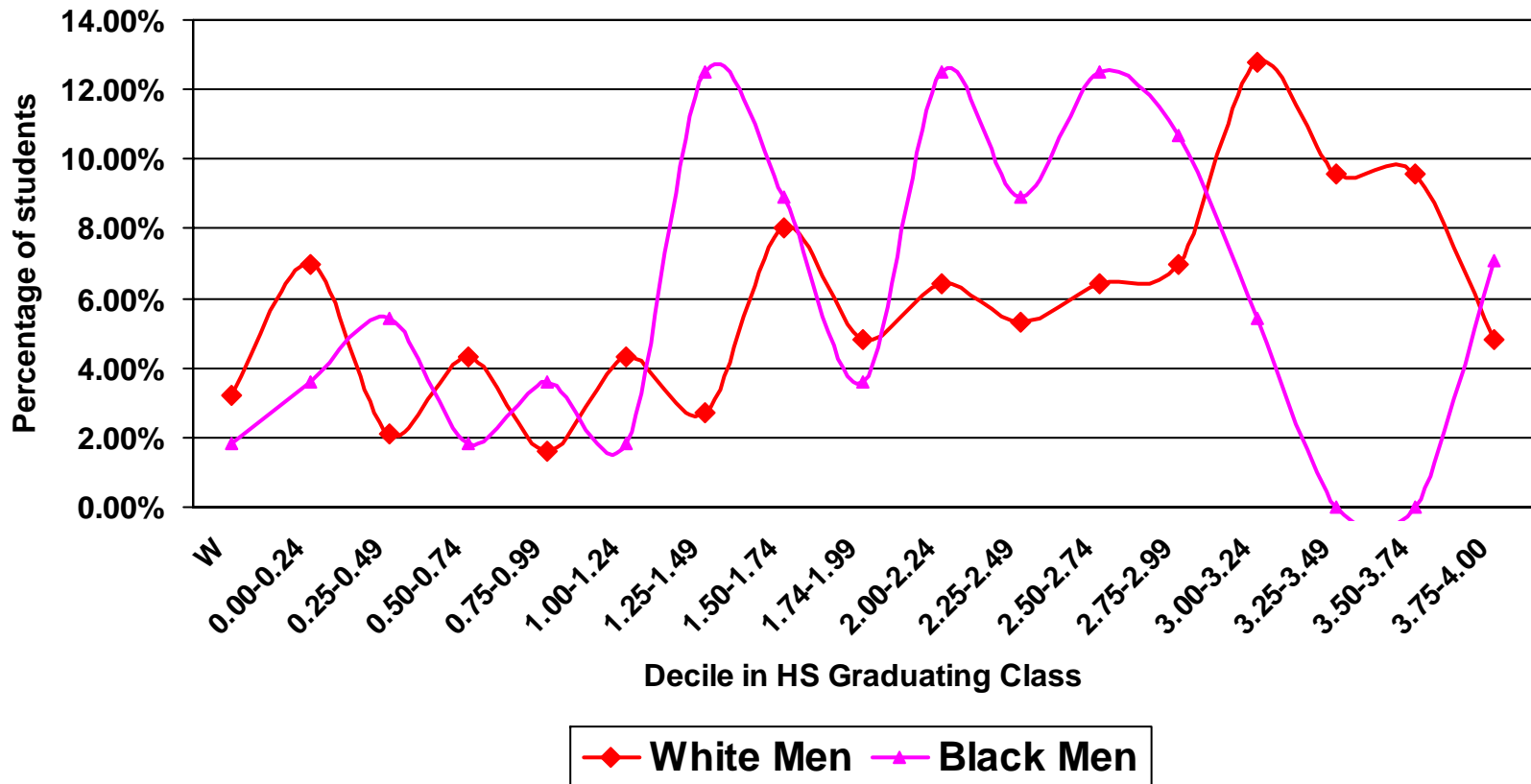
Freshman Fall 2004 Semester GPA

Men



Freshman Fall 2004 Semester GPA

Men



Freshman Fall 2004 Semester GPA

Percentage of Students in Wide Semester GPA Ranges

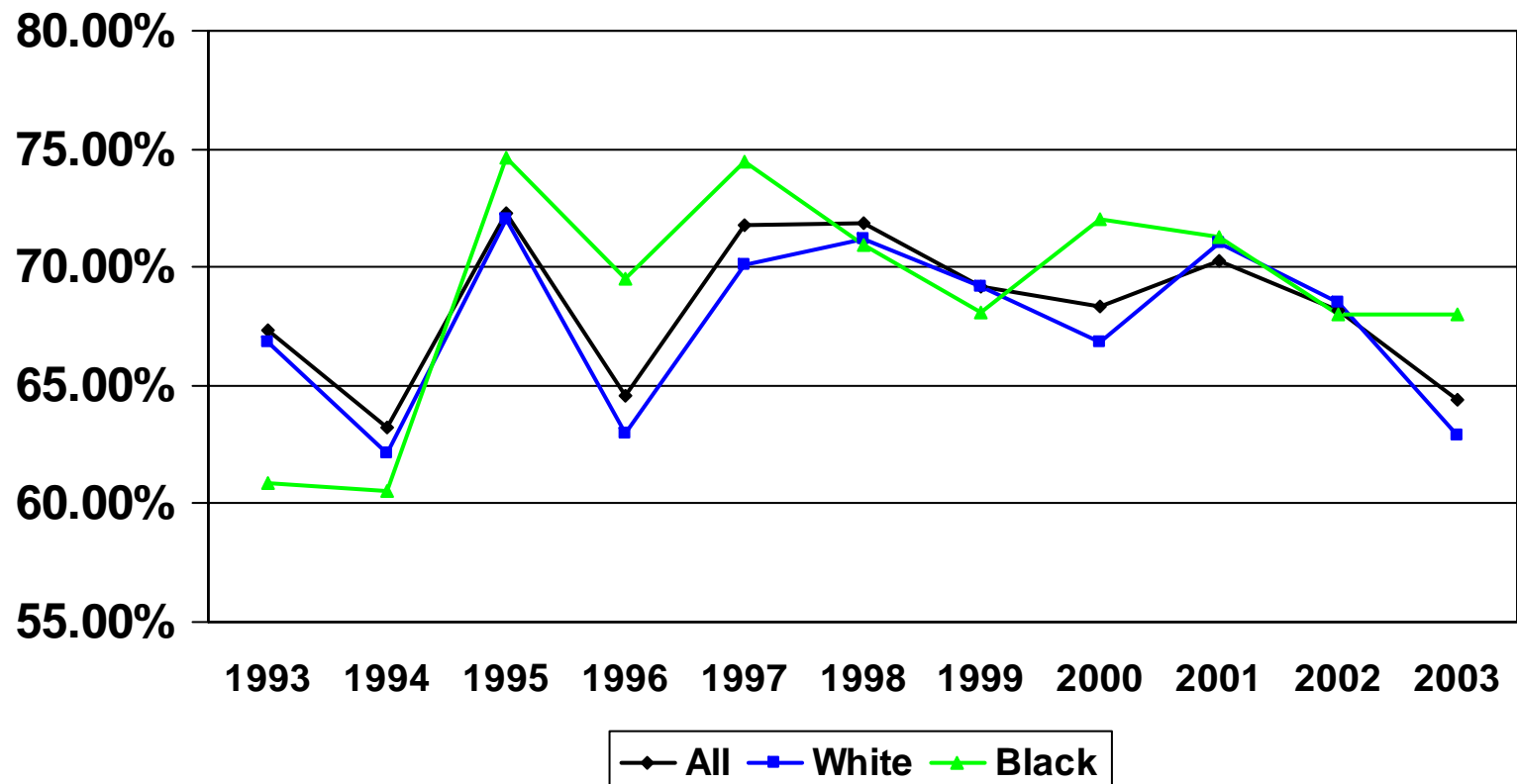
	W	Below 2.0	2.0-2.99	3.0 and Above
White Men	3.2%	34.8%	25.1%	36.9%
White Women	3.8%	26.3%	33.8%	36.1%
Black Men	1.8%	41.1%	44.6%	12.5%
Black Women	1.2%	49.1%	34.4%	15.3%

Mean Semester GPA By Place of Residence

	Off-campus	Pacer Commons	Pacer Downs
White Men	2.33	2.59	1.93
White Women	2.54	2.69	2.09
Black Men	1.73	2.19	2.20
Black Women	1.49	2.11	2.10

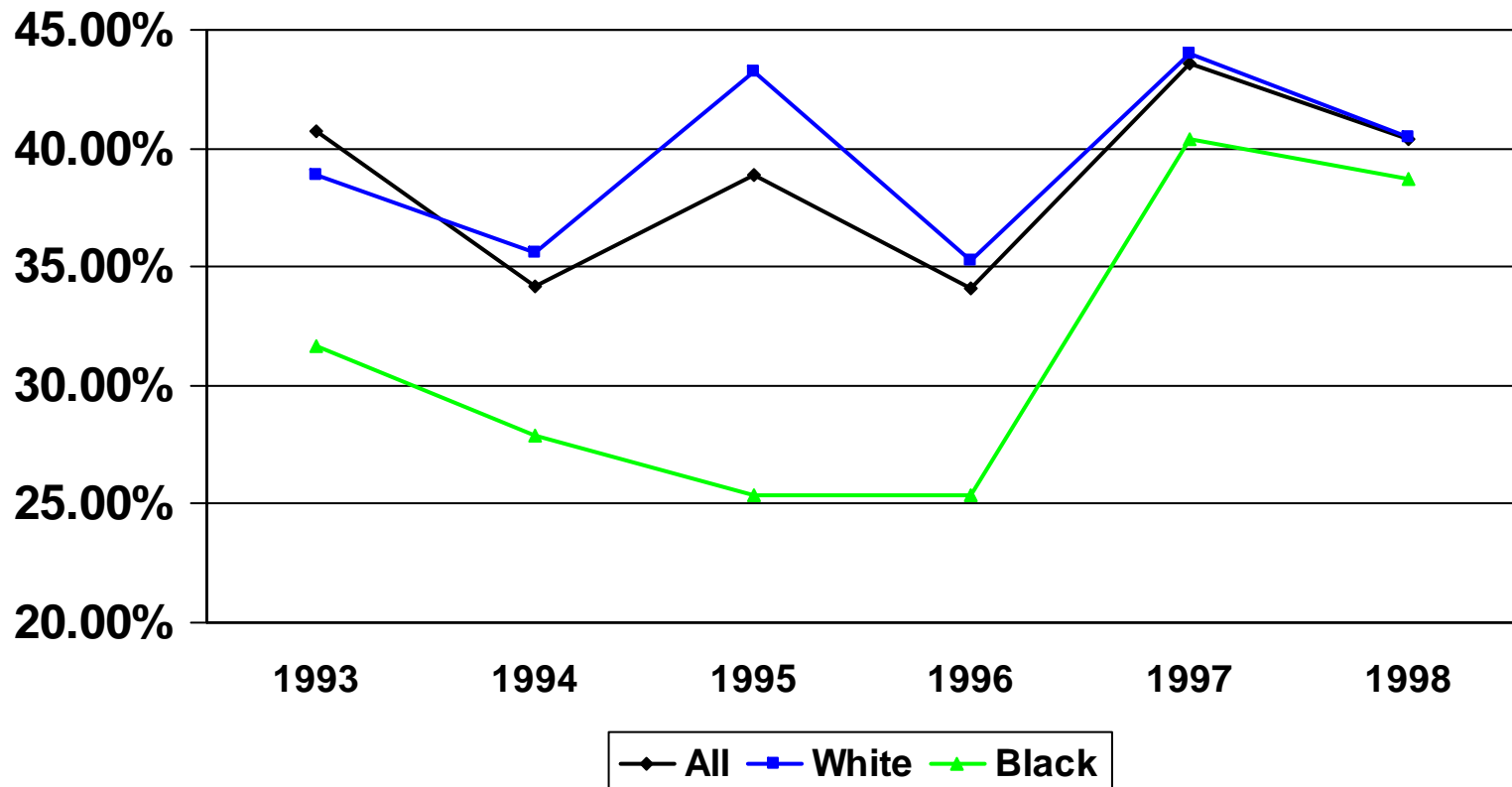
One-Year Retention Rates

Retention of Full-Time, Baccalaureate-Seeking, First-Year Students



Six-Year Graduation Rates

Graduation of Full-Time, Baccalaureate-Seeking, First-Year Students in Six Years



Graduation & Retention Rates

Retention of Full-Time, Baccalaureate-Seeking, First-Year Students

